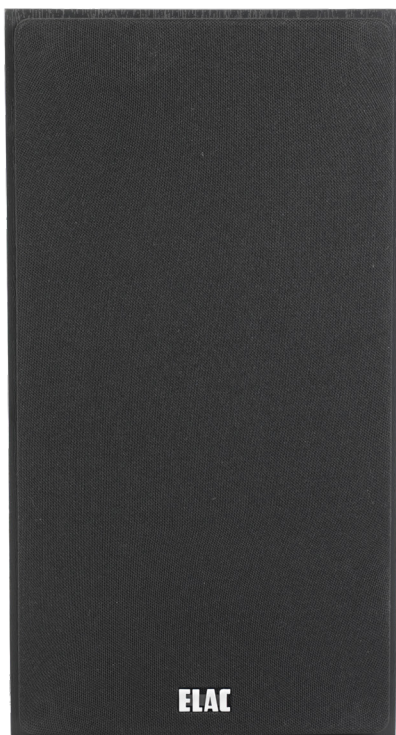


## Uni-Fi 2.0 Series by Andrew Jones.

### The latest chapter in coherent concentric sound.

Improving upon the critically acclaimed Uni-Fi series, the Uni-Fi 2.0 incorporates numerous changes that elevate the performance beyond the originals. In a complete redesign; from drivers to crossovers to cabinets, this new series redefines what is possible from a compact affordable loudspeaker.



## Uni-Fi 2.0 UB52 Bookshelf Loudspeaker

### Beyond the Bookshelf

Space constraints should never compromise great sound. The Uni-Fi 2.0 UB52 is the perfect solution when space is at a premium yet demand for audiophile sound is not negotiable. Using the same outstanding drivers and technology as the other models in the series ensures this compact, 3-way, bass reflex monitor delivers a matched sonic signature.

## UNI-FI 2.0 SERIES FEATURES

### Brand New Custom-Designed Concentric Driver

A new wide-surround tweeter enhances its low and high frequency extension allowing for improved blending with the midrange driver. An entirely new mid-range design features a larger diameter voice coil, new aluminum cone profile, new low-profile surround, and an all-new neodymium magnet assembly.

### Newly Developed 5.25-inch Aluminum Woofer

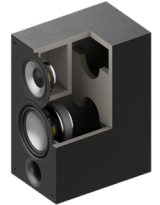
A newly developed single piece aluminum dished cone results in improved stiffness. Combined with an oversized magnet, large diameter voice coil, and extended pole piece, these changes result in improved accuracy and bass dynamics.

### Sophisticated Crossover

An enhanced design improves response linearity, improves driver integration and delivers a true 6-ohm nominal impedance for compatibility with virtually all AV receivers.

### Robust Cabinets

Every Uni-Fi 2.0 enclosure is engineered with thick MDF outer walls and a luxurious black ash vinyl finish. Specially located internal bracing adds stiffness and strength to the cabinet's outer walls, reducing the cabinet vibration that causes unwanted coloration.



### Front Firing Ports

Relocating the vents to the front on the bookshelf and center speakers allows for greater freedom of placement and closer placement to a rear wall.

## UB52-BK SPECIFICATIONS

SPEAKER TYPE.....	3-way bass reflex
FREQUENCY RESPONSE.....	46 to 35,000 Hz
NOMINAL IMPEDANCE.....	6 Ω
SENSITIVITY.....	85 dB @ 2.83v/1m
CROSSOVER FREQUENCY.....	200 / 2000 Hz
MAXIMUM POWER INPUT.....	140 Watts
TWEETER.....	1-inch soft dome
MID-RANGE.....	4-inch aluminum
WOOFER.....	5.25-inch aluminum
CABINET.....	CARB2 rated MDF-braced
CABINET FINISH.....	Black Ash vinyl
PORT.....	Dual flared
BINDING POSTS.....	5-way custom metal
DIMENSIONS (WxHxD).....	7.28" x 13.62" x 10.83"
NET WEIGHT.....	18.26 lbs each

